

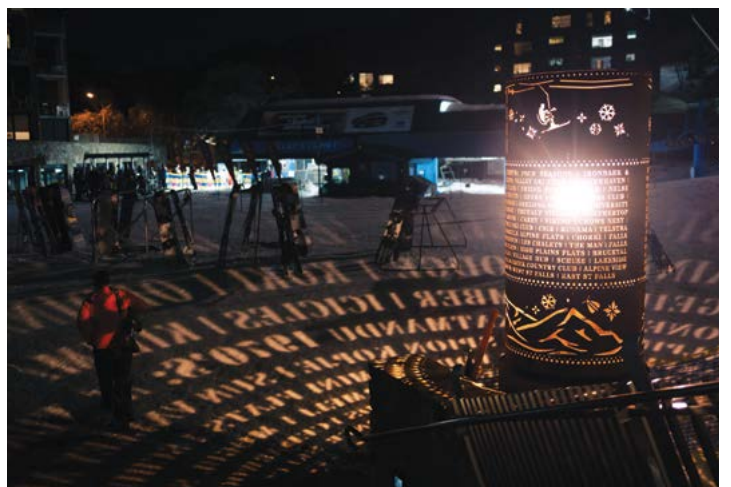
FALLS CREEK & MOUNT BEAUTY THIS WEEK

PRICELESS

WINTER EDITION TEN

FRIDAY 19TH AUGUST 2022

It's Time to Celebrate!



Race leaders flying over Heathy Spur on Lap One in 2019. Pic – Ken Bell

Left:...closely followed by a serious group all trying to outdo the rest! Pic – Ken Bell

Right: The Festival of Light Sculpture in Slalom Plaza helps celebrate 75 years of Falls Creek! Pic – FCRM

FROM THE CEO

Snow Storms and Calamity

This last week has seen a cold front deliver a nice little refresh of the snowpack, albeit a little higher moisture content than champagne pow, we'll take it.

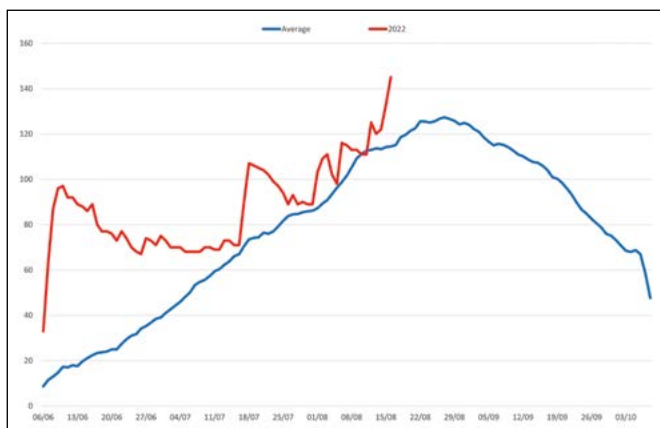
As an advocate of 'there's no such thing as too much snow,' there is such a thing as too little snow. Thankfully, this season, the resort experienced its best start, if not its best ever start to the season, thanks to a significant front hitting ahead of the Queen's Birthday long weekend creating a base upon which to build.

For those about to retort and proffer another season where the start was better, a picture is worth a thousand words. So... here it is.

The average line (blue) represents data all the way back to 1988, whilst the red line is this year's average snow depth, as measured by FCARMB Ski Patrol, at key snow depth stakes across the resort. As can be seen, the season ripped off to a great start and snow depth has remained above average to this point, despite June and July having enough sunny days to work up an early goggle tan.

Even looking at the old SEC data, graphically it looks like 1940, 1943, 1946, 1965, 1968, 1970 and 1971 had big starts in June too, however the data is not as granular for a precise comparison, so we'll take this year's start to the season, as the best in quite some time.

Year to date, the cumulative total has broken through the 2m mark, but we're still a way off 2003's 3.8m (and the 1964, 1981, 1990 and 1991 bumper seasons).



Source: FCARMB Ski Patrol.

However, more interestingly, the number of 'snow events' (defn: a period of continuous snowfall) is back above average, even though the number of snow days (defn: number of days it snowed during the snow event), is down. This is a trend that has been clear since the 1990's. Resorts are seeing larger falls, but across a smaller number of

days, meaning that when it does snow, it's coming down in greater amounts.

These 'less but more' storms present challenges on a number of levels. The biggest one for those travelling to the resort, being the decision about when (and where) to put on snow chains.

Let me make this decision a little less complicated. Put snow chains on when you see signs, or a friendly resort worker, telling you to and when the snow chain bays are accessible. Please do not just stop in the middle of the road when you have already lost traction, this only creates an even greater traffic hazard, fit chains when instructed, not after you've gone backwards, sideways or worse.

The fantastic retailers across the valley have chains to rent and will also explain how to put them on (or if you're heuristically inclined visit here: <https://www.youtube.com/watch?v=YY7X8KVtk9I>), plus there's a fine if you're not carrying them too.

One of the most common questions, aside from 'Why do I need to put chains on'... Well, firstly, here's why... Exhibit A.

Please note, in this picture (right), snow had fallen earlier in the day and had been cleared, albeit pre frozen snow (aka rain), created an increased risk of traction issues (slop), hence the road conditions stated that chains must be fitted to two-wheel drive vehicles... alas, this driver chose to ignore that directive...oops!

Plan Your Falls Creek Trip

RESORT ENTRY PERMITS
A Resort Entry Vehicle Permit is required for your vehicle when entering the resort between the 4th June until 2nd October. The entrance to the resort is at Howmans Gap, approx 4kms below the village. Permits can be pre-purchased and printed at home prior to arriving in the resort, or purchased at the resort entrance.

The day rate is \$62. If you opt to print your permit at home you will receive a discounted fee. If arriving after 5pm and departing prior to midnight on the same day, entry is free.

Season Permits are available for purchase online for \$600 and can be collected at Howmans Gap Ticket Box or the Visitor Information Centre.

Resort Entry Fees fund the essential services of:

- Ski Patrol
- Car Parking
- Water Supply
- Snow Clearing
- Waste Management
- Visitor Information Services

PLAN YOUR TRIP
Pre-purchasing tickets and printing at home makes it faster for you to get into the resort.

Visitor Information Centre
The Falls Creek Visitor Information Centre is located in the Resort Management Office, upstairs on the corner of Slalom Street and Snowgum Lane.
Open 8am - 5pm daily for visitor information and gym memberships. Ph: (03) 5758 1200 (Map ref. E4).

Accommodation Transfer Service (ATS)
Operating from the Terminal Building on Bogong High Plains Rd, the Accommodation Transfer service will transport you, your group and your luggage to your accommodation in the village. Tickets can be pre-purchased online or at the ATS terminal.

Hours of Operation:
Saturday - Thursday 8am - 10pm
Friday 8am - midnight

ATS RATES

Trip	One Way	Return
Adult	\$28	\$45
Child (5-16yo)	\$20	\$28
Child under 5 (no luggage)	Free	Free
Family Pass (2 adults, 2 children 5-16)		\$125
Excess baggage		\$10
Transfer Service Season Pass		\$220
Taxi service (up to 10 ppl, no luggage)	\$100	\$180

Visitor Information Centre
The Falls Creek Visitor Information Centre is located in the Resort Management Office, upstairs on the corner Slalom Street and Snowgum Lane.
Open 8am - 5pm daily for visitor information and gym memberships. Ph: (03) 5758 1200 (Map ref. E4).

Village Access
All roads in Falls Creek Village are now closed to all traffic.

For more details about Falls Creek Resort please visit fallscreek.com.au

Falls Creek Resort Management can be contacted via info@fcrm.com.au or (03) 5758 1200

[fallscreekresort](#)
[fallscreek](#)

FROM THE CEO



Don't let this happen to you! Pic – Courtesy FB

The evidence which supports the use of this snow chain relates to the proof that with diamond pattern chains, the contact points to surface area, generated by the mesh pattern, provides greater contact with the ground surface and therefore superior traction to alternatives. Furthermore, the pattern type offers more lateral or sideways stability, preventing

the possibility of slipping sideway (Exhibit A above), unlike ladder chains (which aren't allowed anyway).

The debate about AWD's, 4WD's, low range and fittings chains to these vehicles is a whole other article. Nevertheless, for everyone's safety, please follow the advice provided and fit snow chains when instructed.

Foodie Tip of the Week:

The Last Hoot (03) 5758 3088 – The team know how to make a burger! All burgers are on brioche buns and the choices – loaded or just plain pulled pork, classic, double,

American, butter milk chicken, or loaded sweet potato, plus the option of fries on the side, are all great (trust me).

However, if pizza is your thing, then you're even more spoiled for choice with chicken, every conceivable meat topping, veg options and seafood too... I highly recommend the Rambler (veg) with meat (salami). There are starters too but be warned the burgers are big and pizza toppings are generous, however my boys always kick off a "Hoot" meal with the cheesy bacon garlic bread. The beverage choices, with local brews and regional wine offerings round out a great meal. Check them out for lunch, dinner or grab some takeaway after a great day on the mountain.

Ok, now get out there and work on that goggle tan. •

Stuart Smythe, CEO
Falls Creek Resort Management

Apologies for the use of props to make a point, the alternative was to show you how much the fine was, not to mention the recovery, haulage fees and obvious embarrassment. Not to labour the point, but if not for a fallen tree stopping the inside left tyre, this car would have flipped and the incident more than just a photo for dramatic effect...

Now, the other question is "What sort of chains do I use - snow socks, ladder or diamond pattern chains?". The regulations in Victoria very clearly state diamond pattern chains are the only acceptable chains to be carried and when directed, fitted to vehicles.

FALLS CREEK BACKCOUNTRY TOURS
By Steve Lee

+61 488 021 883
weski@forsteve@gmail.com
falls.creek.backcountry
falls.creek.backcountry.tours

Skip the lift line and leave the crowds behind with Australia's only snowmobile lifted Backcountry Tours. Our custom built sleds return you to the top, saving all your energy for the ride down.

Tours can be suited to all riding abilities, from novice to expert, all ages welcome. So what are you waiting for? Grab some mates or the family and explore 450 hectares of untouched terrain, from the shoots of Mt McKay to the open bowls of Rocky Knowles



Book Here

Back in September 2020, local legend and three-time Winter Olympian, Steve Lee, had a debilitating stroke. He is currently fighting his way back through extensive rehabilitation to some life back on snow. The operation now runs in his name with all profits going to his recovery.

There's nothing that brings Steve more joy than riding a fresh line, but almost more so watching others enjoy that same feeling.

So take a lap for Steve, your best day on snow awaits!



fallscreeksnowmobiletours.com.au
Drive your own today!

GET YOUR BOOTS
FIT BY PROFESSIONALS
WE SPECIALISE IN CUSTOM SKI BOOTS & SKI ORTHOTICS*
*SOME SERVICES ELIGIBLE FOR HEALTH INSURANCE REBATES

COMBINING SKI + PODIATRY
WITH OVER 30 YEARS OF BOOTFITTING EXPERIENCE

WWW.ORTHOSKI.COM.AU
FALLS CREEK - GEBIS BUILDING
03 5758 3662

ORTHOSKI!

salomon Service & Demo Centre

SNOW New Range of Salomon Ski & Snowboard Boots have just arrived!!
Expert Master Boot Fitter's on site to fit you up.
FREE Pick-up & delivery for all ski and snowboard rentals!
40% OFF all Outer Wear during June!

Rider RENTALS

In the Village Bowl at the Falls Creek Hotel Map (Ref: M2) Ph: 03 5758 3819

HIRE • RETAIL • TUNING • CUSTOM BOOT-FITTING

YOGI'S
SKI & SNOWBOARD

A RANGE OF SKI BOOTS FOR EVERY SHAPE & ABILITY!
A LIFETIME OF EXPERIENCE IN THE INDUSTRY!
MASTER FIT AND SIDAS CERTIFIED

Ph: 03 5758 3377 yogisfalls.com Map Ref: K5

Be part of the team!
As a member of the Falls Creek Race Club, young members can...

FallsCreek Race Club

- Learn life skills in a wonderful rewarding environment.
- Make friends for life – with opportunities to travel the world.
- Learn to ski and board in a family friendly surroundings.

Programs from primary to late teens – including tertiary tuition for full-time athletes.
'An integral part of Falls Creek and its history!'

Wb: www.fallscreekraceclub.com.au Em: ski@frcr.com.au

Want to stay involved after the kids have stopped?
Social Membership: \$25 per annum
For more details email us at: ski@frcr.com.au

FURRY BOOTS

A Fashion Statement?

My first thought when I look at this style of snow boot is this must be what George Lucas's art department used as the frame of reference for Chewbacca's feet when designing costumes for Star Wars. The era is right. It was the 1970's.

I'm still not sure that I actually like what I think of as the classic, quintessential long hair 'furry' boots. Don't get me wrong, I think they are fabulous. After all it's 'Farshun Darling.' Do I want to wear them throughout an Australian snow season? No, well yes, but only when the roads are snow covered. They are incredibly impractical. They shed as much hair as my dog, they smell like my dog when wet, and just like with owning a dog, you have to wash them every time you walked on a muddy, slushy alpine road so you don't track mud into your accommodation.

Where did the design inspiration come

from for these iconic boots? Are they from the 1970's or earlier? Frustratingly enough, googling 'furry snow boots' and 'long goat hair snow boots' didn't get me the verifiable answers that I was looking for. Obviously not enough fashionistas out there doing background research into their après footwear.

This highly spottable après snow boot, known as the quintessential 1970's longhair goat moon boot, or the Yeti, has had a fashion resurgence in the last 5-10 years thanks in part to hipsters, vintage fashion lovers and festival goers who can't get enough of this retro style.

Yeti boots have always been a love-them-or-loathe-them fashion trend. They first hit disco dancefloors and Euro alpine resorts in equal measure in the 1970s, then returned with a vengeance in the late 1990s when British IT girls Kate Moss, Meg Mathews and Tara Palmer-Tomkinson wouldn't walk out the front door without a pair of these hairy beasts on their tootsies.

These furry boots of varying heights and



A pretty comprehensive range of fashionable furry boots! Pic - Courtesy I Dream of Snow

materials are not simply fashion statements: they promise to keep your feet warm and cosy despite unforgiving conditions while still having a distinctive stylistic edge. The retro appeal is driven as much by function as it is by flair. Once based on Inuit garments, current versions of fur boots are adopting numerous fur types and shapes to fit current fashion moods and lifestyles.

Combining high-tech materials (both waterproof and breathable) with fur is commonplace, if not taken for granted with footwear. This hybridisation allows for greater sartorial uses, hence increasing its appeal among a wider audience.

The old goat boots of the '70's are also being updated in coyote and fox, even Mongolian lamb and there are styles to suit every personality and use. So, if you feel the pull of these furry little monsters for your feet, have a look online at www.idreamofsnow.com over the coming weeks. I'll be loading up my collection of furry snow boots for sale, or the ones that don't fit me at least. • Nyree Fiddes, www.idreamofsnow.com

astra
FALLS CREEK

Modern Alpine Dining

OPEN DAILY - APRÈS FROM 3PM
DINNER FROM 5.30PM

BOOKINGS ESSENTIAL
WWW.ASTRAFALLSCREEK.COM.AU
LOCATION - MAP: J4, 5 SITZMARK ST, FALLS CREEK

Alpine Pepper
CAFE

1 Bogong High Plains Rd
Falls Creek

Coffee, Breakfast & Lunch
open daily from 8am
03 5758 3615

SOMEPLACE ELSE
Tuesday to Sunday from 4.30pm
Bookings Essential

1 SITZMARK STREET — FALLS CREEK, VIC
~ BOOK ONLINE VIA OUR WEBSITE ~
WWW.SOMEPLACEELSEFALLSCREEK.COM

@someplaceelsefallscreek
@someplaceelsefallscreek

huski
kitchen

DINNER OPEN 6 NIGHTS
(Closed Sundays)

DINE IN SET MENU
\$55 2 COURSE
\$70 FEELING CHILI MENU
KIDS MEALS AVAILABLE
BOOKINGS ESSENTIAL
WWW.HUSKI.COM.AU/DINING
LOCATION - MAP: J4, 3 SITZMARK ST, FALLS CREEK

Attunga
Falls Creek

Mountain Lodge
• Bar & Restaurant •
MEALS & LOUNGE BAR
Daily From 4pm
Aperitivo Happy Hour
Wednesday 4-6pm

Experience the fabulous views & relax in the lounge whilst enjoying warm hospitality

10 Arlberg Street
03 5758 3255
www.attungalodge.com.au

GAY SKI WEEK

Fabulous Darling!

Australia's ultimate Winter Pride Festival, Gay Ski Week Australia, is excited to return to Falls Creek this September. Bringing the LGBTQ+ community to the mountain, over 10 amazing days of frosty fun and nine sizzling nights of camp entertainment.

This is the twelfth year the team at Points of Difference Travel & Events have run the festival, and they are not only excited to return to the mountain and paint the slopes with pride, but also with what Falls offers them as well. No stranger to Falls Creek, the fabulously furry Frock Hudson is bringing a host of entertainers to the snow this year, including drag entertainers Freddie Merkin & Miss Jay; piano man Cameron Thomas, and DJ's Kate Monroe, Sugar Plump Fairy & DJ Cliterally. They plan to have just as much fun in the evenings as everyone else will have hitting the slopes during the day.

"It's so great to be back at Falls Creek this year," Adam Bold from Gay Ski Week said, "even though I'm not much of a skier myself, I love bringing the queer community to come and be a part of all the fun here at Falls. And I'm so excited to bring more entertainment this year as well."

Thanks to a new partnership with St Falls Resort, Gay Ski Week Australia are transforming two amazing spaces on the mountain that will operate as event hubs, with free events for all to enjoy no matter how you identify. Disco Pop will offer a free fun, frisky and funky nightly social event at "The Palace" with a focus on DJ's, drag, cool tunes and hot bodies! Frock Hudson's Cabaret Lounge will operate nightly as it

shifts the entertainment into a different gear, with a late-night piano bar filled with musical shenanigans, cocktails or a nightcap and a tonne of camp fun.

Gay Ski Week Australia are also excited to cap off the festival with the highest Pride Day in the nation. On Saturday 10th September from day to night they'll celebrate inclusion and pride on the mountain with a series of activations and celebrations including a Rainbow Run, a stupendous scavenger hunt, and a fabulous party filled with drag entertainment as they farewell Falls Creek in style. They'll also announce the winner of the inaugural "Drag Up Your Business" competition, as they celebrate a fabulous ten days of fun on and off the slopes.

So don't be surprised if you see a drag queen or two as you ski around Falls Creek this September (be sure to come and say hi when you do), because Gay Ski Week is returning to the mountain, and they can't wait to have a fabulous time skiing all day and partying all night.



"Frock Hudson" and "DJ Cliterally" our queer artists and major source of entertainment performing at this year's GSWA. Pic - Sam Purdie

Gay Ski Week Australia runs from Friday 2nd to Sunday 11th September 2022. Find out more at pointsofdifference.com/ski.

FALLS CREEK HOTEL

OPEN FOR LUNCH
11:30am - 2:30pm daily

Mountain views, friendly staff, reasonable prices & delicious food!

BOOKINGS RECOMMENDED

HAPPY HARVEY HOUR!
Tuesday 23rd & Thursday 25th
3:30pm - 4:30pm
The fabulous Tommy Hanlon!!

www.fallscreekhotel.com.au
Ph: 03 5758 3282
23 Falls Creek Rd, Falls Creek. Map Ref: M2

SLIDES COFFEE BAR
OPEN FROM 7:30 AM

EAT
HOT DOGS TOASTIES DIM SIMS
BAKERY GOODS SWEET TREATS

DRINK
HOT CHOCOLATE COFFEE COLD DRINKS

APRES
GLUHWINE BOOZEY COFFEE BEER
MARGARITAS G&T

LOCATED IN SLALOM PLAZA
LOOK FOR THE RED UMBRELLAS!

theLastHoot
Café · Bar · Pizzeria

• Open 7 Days •
From 11am
Dinner from 5pm
Full menu, great pizzas & burgers
Pizzas available all day
Dine In or Take Away
Bookings Recommended!

Slalom Plaza, Falls Creek
At the bottom of Wombat's Ramble. Map Ref: F3

03 5758 3088

When in Myrtleford, visit...
The Old Factory Brewing Co
15 Myrtle St (Great Alpine Rd)
Open Thursday to Sunday Ph: 03 5752 1345

FRYING PAN INN
SINCE 1965
BARBQUE · BAR & BOTTLE SHOP

OPEN 7 DAYS
BAKERY & COFFEE, LUNCH, APRÉS & DINNER

BAKERY FROM 10AM
DINNER FROM 5PM
HAPPY HOUR 4PM - 6PM

WWW.FRYINGPANINN.COM.AU
LOCATION - MAP 02, 4 VILLAGE BOWL CT, FALLS CREEK

summit ridge
restaurant

OPEN Six Nights A Week
Closed Tuesdays

Five Course Degustation and a la carte Menu available!

Bookings can be made through our website:
www.summitridge.com.au

Phone: 03 5758 3800 for reservations
Email: ski@summitridge.com.au
www.summitridge.com.au
Schuss Street, Falls Creek

DISABLED WINTERSPORT AUSTRALIA

Kids+ Snow Sports Camp

Kids+ (kidsplus.org.au) have held their first ever Snow Sports Camp, a therapy program for children and young people living with disability, at Falls Creek with enormous success and inclusiveness.

In partnership with Disabled Wintersport Australia, organised by local Program Director Min Middleton, and assisted by our Falls Creek Guides, this camp provided an opportunity for Kids+ families to experience the magic, and challenges, of snow sports in a supported, inclusive and welcoming environment.

Sit-skiing, standing skiing, snow play, and of course chairlift riding experiences, made up day-time activities, with accommodation for families at the Howman's Gap facility.



A very happy group of Kids+ members, the families and the fantastic DWA Guides.

Kids+ have made this camp happen, through community donations which minimise the cost to participants, not only for families to experience inclusivity at the snow, but also for our group of teenagers to be able to spend time together and share their lived experiences.

"Amazing! Those smiles! I don't think I have ever seen (my child) as engaged as she was over this weekend! Smiling, chatting, persisting! I think that being around others with Cerebral Palsy was a real benefit for her - a much more level playing field! And our guide was amazing! Such a legend! Thank you and the team. This was a really big success for (my child)" – from the parent of Kids+ Snow Sports Camp participant.

Each family who experienced the camp have already confirmed their attendance for next year, making this camp a future staple on the Kids+ therapy program calendar. Kids+ would like to sincerely thank everyone who made this possible.

Kids+, based in Geelong provides paediatric allied health therapy and support services for families, children and young people living with neurological conditions such as cerebral palsy. Kids+ believe their role is to support young people and their families, from birth through to young adulthood, to live the life they want to live.

For more information contact: Sharon Gibbons, Marketing Manager, Kids+. Mb: 0407 640 060. Em: sharon.gibbons@kidsplus.org.au. Wb: www.kidsplus.org.au.

If you would like to know more about Disabled Wintersport Australia, or would like to donate, go to: <https://www.disabledwintersport.com.au/home/> •

Dinner & Drinks @Lakeside
\$15 House Cocktails
Relaxed Menu
Kids Games Room
Open from 4pm
Book Online!

Lakeside FALLS CREEK

- Lodge
- Lounge
- Bar
- Eatery

Ph: 0455 500 849 | www.lakesidefalls creek.com.au



Fancy a lift to your restaurant tonight?

Oversnow Taxi Service Available

Carries up to 10 people.

Pick up available from all accommodation venues on the mountain.

\$100 one way or \$180 return
 Last taxi 9:30pm.

Reservations essential, please call
03 5758 1203



Cloud 9
 FALLS CREEK

OPEN DAILY
 Café 8:30am – 4pm
 Bistro 11am - 3pm
 Mezzanine Now Open
 Top of the Halley's Comet Chairlift
 Cashless Venue

Kasa Bar - Izakaya style
 specializing in Whiskey,
 Sake and Ramen

Located next to the
 Eagle Express Chairlift
 (listen for the Japanese Hip Hop)

Thursday - Monday.

*Menu & updates available on
 Insta @ kasabarfalls creek

*Walk in policy

*(03) 57583222



FALLS CREEK MUSEUM

PH: 03 5758 1200



WHEN THE BRIGHT YELLOW FLAGS ARE OUT – WE'RE OPEN!

Locate right beside the bottom station of Halley's Comet Chairlift!

Spend some time and take in the fabulous history that has earned this community so much respect! And, talk to any member of our team about the rewards of volunteering in the Falls Creek Museum.

4 Slalom Street, southern end of the Panabode building.

Phone: 03 5758 1202 for further information

Wb: www.falls creek museum.com.au

Em: info@falls creek museum.com.au

Fb: facebook.com/falls creek museum

Welcome to KANGAROO HOPPET 2022

Welcome To Our 30th Hoppet

On behalf of the Organising Committee it is a great pleasure to welcome all participants and supporters to Falls Creek for the 2022 Kangaroo Hoppet.

As I write this in the evening of 16 August to meet a print deadline of 17 August, skiers from 22 nations have already entered – so once again the resort will really be living up to the tagline ‘The Fourth Saturday in August – When the World Comes to Falls Creek.’

Regardless of whether you have travelled from around the corner or around the world to be with us I hope that you all enjoy the warm hospitality and atmosphere that the Hoppet, with a lot of help from our partners and supporters in the local communities, manages to deliver to our skiing friends from around the world each year at Falls Creek.

While welcoming skiers and friends to the event, I would like also take the liberty of speaking on your behalf to acknowledge and thank the groups without whom there would not be an event – beginning with our three major sponsors and partners AGL Energy, Falls Creek Alpine Resort and the Mount Beauty & District Community Bank.



Thanks also to the rangers from Parks Victoria for their advice and assistance in determining course options in the Alpine National Park, the Alpine Shire for the use of their community facilities in Mount Beauty, and to 4Site, who, to quote from their Facebook page ‘transport guests, luggage, freight, garbage and good vibes to the Falls Creek Community. And this includes transporting ‘stuff’ out across the High Plains to Hoppet food stations and bringing it back again.

And then we have the Falls Creek SES, Ski Patrol and Medical Centre folk who do their best to ensure that we are well looked after when things do not go as planned.

Thanks to our product sponsors Mt Beauty Bakery, 32 GI, Fischer, Rojo, Elude and Brazen Brownies.

And, to leave the best to last, a HUGE THANKS to the members of our organising committees, our race office staff, the team from Alpine Timing and the small army of volunteers from the local and cross country skiing communities who are the backbone of our operations... with special mention of Birkebeiner Nordic Ski Club and the Rotary Club of Mount Beauty.

Have a great day. •

Allan Marsland OAM
Chairman, Kangaroo Hoppet

The 2022 Hoppet Dozen

The Hoppet Dozen, which comes in packs of six whites or six reds, is available only from the Kangaroo Hoppet Race Office in Mount Beauty, and provides a unique chance to try out a range of wines from across our local Alpine Valleys and King Valley wine regions.

Along with wines from long time Hoppet Dozen partners at Sam Miranda, Gapstead and Ceccanti, we are pleased to welcome a new winery to the Hoppet Dozen this year. Billy Button Wines was founded in 2014 by experienced winemaker Jo Marsh and, together with her husband Glenn James, they source parcels of fruit from selected vineyards across the Alpine and King Valleys. While they are known for their classic style wines, their extensive range of more exotic varietal wines is guaranteed to expand your wine horizon.



The Hoppet dozen has always been a popular buy – get in early for your value for money dozen. Pic – Ken Bell

WHITE WINES

Sam Miranda Wines

Snow Road, Oxley.

NV Prosecco

2019 Mountain Range Chardonnay

2021 Sam Miranda Pinot Grigio

Billy Button Wines

Camp Street, Bright & Myrtle Street, Myrtleford

2018 ‘The Feisty’ Friulano

Gapsted Wines

Great Alpine Road, Gapsted.

2019 High Country Pinot Gris

2021 Limited Release Fiano

RED WINES

Sam Miranda Wines

Snow Road, Oxley.

2016 Sam Miranda Dolcetto

2019 Super King (Sangiovese, Barbera)

Billy Button Wines

Camp Street, Bright & Myrtle Street, Myrtleford.

2021 ‘The Affable’ Barbera

Gapsted Wines

Great Alpine Road, Gapsted.

2019 High Country Tempranillo

High Country Cabernet Sauvignon

Ceccanti Kiewa Valley Wines

Bay Creek Lane, Mongans Bridge.

2016 Shiraz

The Hoppet Dozen is available from the Hoppet Race Office located in the auditorium next to the Mount Beauty Information Centre from Fri 19th to Sun 28th August, unless sold out before then.

Even if you can't make it to the Hoppet Office during Hoppet Week, there is no excuse not to drop in on one of these cellar doors to try out the wines on offer and take some home to share with friends. •

KANGAROO HOPPET WEEK 2022

2022 HOPPET SHOP

Opening Hours

Saturday 20th Aug	2pm - 6pm
Sunday 21st Aug	2pm - 6pm
Monday 22nd Aug	2pm - 6pm
Tuesday 23rd Aug	2pm - 6pm
Wednesday 24th Aug	2pm - 6pm
Thursday 25th Aug	2pm - 6pm
Friday 26th Aug	10am - 12midnight
Saturday 27th Aug (Race Day)	6:30am - 8:30am 2pm - 6pm
Sunday 28th Aug	9am - 3pm

Hoppet Passports and Results will be available at the Presentation Venue:

The Mount Beauty Community Centre, Kiewa Crescent
Saturday 27th Aug 6:30pm - 9pm
Sunday 28th Aug in the Hoppet Shop

Visitors and community members who are not involved in the event are also welcome to visit the Hoppet Shop and Race Office to check out the results, the souvenir merchandise and the Hoppet Dozen.

There are over 30 volunteers helping in the Hoppet Shop/Race Office. Many of them don't even go near the snow, but they are always happy to support the event – and for this the organisers are extremely grateful.

Kangaroo Hoppet Race Office

Open Saturday 20th to Sunday 28th August

Located in the Auditorium in the Visitor Information Centre, on the left 150 metres after the West Kiewa River bridge as you approach Mount Beauty.

This is your One Stop Hoppet Shop where you can:

- Collect race numbers.
- Check out the range of Hoppet clothing and souvenir items.
- Check out the Hoppet Dozen featuring wines from the King Valley and Alpine Valleys wine regions, and, of course, make a purchase.
- Purchase a Worldloppet Passport.
- Enter the race. Late entries accepted until 4 pm Friday 26th August.
- Catch up with friends and check out who is here this year.

THE PROGRAM The Main Event

Falls Creek Nordic Bowl

9:30am Kangaroo Hoppet 42km

9:40am Australian Birkebeiner 21km

9:50am Joey Hoppet 7km

Flower Ceremony

Falls Creek Nordic Bowl

11:45am Winners of the 42km

11:50am Winners of the 21km

11:55am Winners of the 7km

12 noon AGL Athlete Scholarship presentations

12:10pm Three spot prizes from Fischer skis announced. One drawn from each of the Hoppet distances.

WORLDLOPPET

**Community Bank
Mount Beauty
& District**

Bendigo Bank

SKI AROUND THE WORLD!


ALPINE
SHIRE COUNCIL


agl


FallsCreek

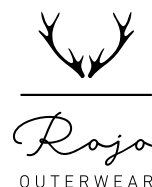

BIRKEBEINER
NORDIC SKI CLUB


BRAZEN
BROWNIES.


32Gi
Sports Nutrition


ELUDE
CLEAN LINES FRESH TRACKS


FISCHER


Rojo
OUTERWEAR



Hoppet Ladies winner in 2019, Iris Pessey from France. Pic – Ken Bell

WORLDLOPPET

SKI AROUND THE WORLD!



Post Race Social Evening and Awards Collection

From 6:30pm. Mount Beauty Community Centre, Kiewa Crescent, Mount Beauty – next to the Bakery.

In the interests of not creating a Covid super spreader event we will not be holding formal presentations.

Instead the plan is to have an informal evening when you can have a drink and chat with friends, inspect the results and collect your age class awards and the new 30, 20 and 10 year Hoppet caps at any time between 6.30 and 9.30.

Even though there will not be formal presentations involving a podium, the podium will be setup for you to take that important picture for posterity or social media as proof of your participation and achievement at this year's Hoppet.

As is traditional, there will be a range of tasty foods outside the centre. Grab a snack, a coffee a soft drink, beer or wine and relax for an enjoyable evening – from 6:30pm

And when you come back down off the mountain and need a meal or just somewhere to hang out over a drink or snack, there are a number of choices, including the Mount Beauty Bakery, Crank Handle Brewery, TakeOut, Treats, West Peak Hotel, Settlers Tavern, Stockpot Restaurant, Lilli Pilli, Templar Lodge, Swiss & Chips, Bombay Velvet, Roi's Restaurant and Mountain Creek Lodge out in Tawonga.

Hoppet 30 - The Morning After

Appreciate Your Achievement!
Hoppet Race Office in The Auditorium, at the Mount Beauty Information Centre.

- Check results.
 - Last chance for Hoppet shopping.
- Relax with friends over a coffee and brunch at The Bakery, Treats, Stockpot, Rocky Valley Snowsports, Lilli Pilli, and then maybe check out the local wineries on the way home. •

AGL is proud to support the 2022 Kangaroo Hoppet.

At AGL, we operate local hydro-electricity stations, and we're proud to play an active role in the community.

Call 1300 584 875
or scan the QR code
to find out more
agl.com.au/hydro



Who's Who in 22

The Kangaroo Hoppet, a 42 km ski marathon, is the southern hemisphere's largest annual international snowsports event and is held annually at Falls Creek on the fourth Saturday in August. In normal (pre Covid) times the Hoppet, along with shorter 21km Birkebeiner and 7km Joey events attracts over 1000 skiers from all around the world. But... what about this year? Who will be in the start field for the event?

Along with the usual collection of local Australian recreational skiers, State and National elite athletes and ski marathon tragics from around the world, we have a few special guests who will be making an appearance.

Elite skiers from the USA

And do we mean elite! Leading the list is Jessie Diggins, 2022 American Skier of the Year, Gold Medalist at the 2018 Winter Olympics, Silver and Bronze medals at the recent 2022 Winter Olympics, and in 2021 the #1 ranked skier in the FIS Cross Country World Cup. And accompanying Jessie we will have Julia Kern who podiumed in the 2019 sprint World Cup in Slovenia. Also on the front row of the Hoppet start will be fellow USA athletes Katie Feldman, Jake Aldicoff and Peter Wolter.

Beijing 2022 Australian Winter Olympic Cross country skiers

Phil Bellingham (Sochi, Pyeongchang, Beijing), Casey Wright (Pyeongchang, Beijing), Lars Young Vik (Beijing) and Seve de Campo (Beijing) are our current Winter Olympians who have entered this year's Hoppet.

Triple J Drive team

Yes! You read that right...Triple J Drive hosts Hobba and Hing have entered in the

Hoppet, and will be accompanied by an ABC TV production team to record their exploits for an upcoming TV special.

Thirty Hoppet skiers

Now this is an interesting phrase. Does it really mean that only thirty people can start in the event? No! Before our lives were so rudely interrupted by the plague we were on track in 2020 to hold the thirtieth Kangaroo Hoppet, there was a list of all those folk who had completed all twenty nine editions of the Hoppet, and the race organisers had even gone to the trouble of ordering a few boxes of special commemorative caps bearing the number 30 in a large font size. Well the list still exists, the caps are in the Hoppet storeroom, and we hope that most of the skiers on the list are also still with us. And will turn up for the Post Race celebrations.

There are 20 skiers still on the list and, while I am not going to name them all, special mention should be made of Marg Hayes who is the only woman on the list. Marg has been chasing Worldloppet ski races around the world for many years and has seven Worldloppet Master medals to her name. Now these medals are not easy to get. Each one represents completion of ten different international ski marathons (and for ski marathons 42km is just the minimum distance, most are longer with Sweden's 90km Vasaloppet at the top of the list). Do the maths and you get seventy ski marathons.

But? What about the 20 Hoppet skiers and the 10 Hoppet skiers? Just so that multiple Hoppet skiers who have not yet made it to 30 do not feel left out we also have some equally special caps, in different colours of course, with 20 and 10 on them for those skiers who have completed the appropriate number of events. And 'No'. If you have completed thirty events you will not get a 20 and 10 Hoppet cap as well. Basically all those who have completed ten or more



Gold medal winning winter Olympian from the US, Jessie Diggins will be competing at this year's Hoppet, with several other very talented skiers from the States.
Pic – Courtesy Wikipedia

Hoppets will get the appropriate cap based on the number of Hoppets rounded down to the nearest ten.

Finally, the usual last paragraph. There is still time to be part of the action at Falls Creek on Saturday 27 August – When the World comes to Falls Creek. And with the option of skiing 7km or 21km instead of the full 42km there is no excuse not to be part of the action. Enter now at www.hoppet.com.au

Why not? Here is my list** of the 20 legends who have completed all 29 Hoppets, and are in the running to get one of those golden caps.

Roland Baltutis, Len Budge, Rod Clutterbuck, Dean Gray, Paul Grusovin, Marg Hayes, David Hunt, Nick Hutten, Lauri Jortikka, Ray Malins, Stephen McDowell, Malcolm McKinnon, Kevin Mock, Peter Nelson, Andrew Paul, Paul Photios, Steven Smith, Riccardo Spiller, Charles Taylor, Christopher Wall.

** *My list!* Now all I need to do is sit back and wait to be beaten up by all those who I have left off. And it is with some sadness that I also mention 29 Hoppet skier Bruce Norton who passed away earlier this year. •

29 Hoppets and 145,000 Plastic Cups

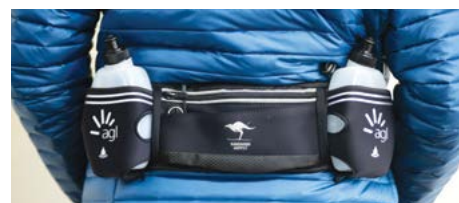
What a horrible thought, but that is an estimate of the number of plastic cups used at the food stations out on the Kangaroo Hoppet course since it was first held in 1991.

'Enough is enough' was the comment from our intrepid Hoppet Food Station Coordinator after the 2019 Hoppet. 'We have to look at more socially and environmentally acceptable options,'

After exploring options that included reusable cups... easily rejected... can you

imagine trying to collect 5000 reusable cups out on the Bogong High Plains and in the Nordic Bowl on a normal day, let alone in a blizzard? The best option seemed to be to get everyone to carry their own drink, with the option to get refills at the food stations.

Further discussions with the folk at AGL, one of our major sponsors, followed by some extensive research on that well known Chinese website Alibaba, and the committee came up with the idea of giving each Hoppet participant a drink bottle belt and a couple of drink bottles, and while you are at it, why not include a pocket to hold a mobile phone and/or some extra food supplies. The accompanying photo shows you the result, and the logos are reflective so drivers may



The very flash – and environmentally friendly Kangaroo Hoppet Drink Bottle belt. Pic – Ken Bell

have a bit more hope of seeing you when you are out training on the roads at night.

What better reason to enter the 2022 Kangaroo Hoppet than to do your best for the planet and stop another 5000 plastic cups being let loose on the environment? Enter now at www.hoppet.com.au •

Pre-Event Tips

There are only eight sleeps to go until the 30th Kangaroo Hoppet World Hoppet event will be held once again! After two years of successful “Do-it-your-way” Hoppets, I estimate that there may be record numbers of skiers turning up to participate in this year’s event. While this year’s event is not one to miss, the Hoppet will still also be running a virtual event for those who can’t make it in person.

The Kangaroo Hoppet is a prestigious event that forms a leg of the Worldloppet Series, and brings cross-country skiers from all around the world to participate in the event. There are three events held on Hoppet day, the 7km Joey Hoppet, the 21km Birkebeiner, and the main event of the day, the 42km Kangaroo Hoppet. So far, it is looking as though we will have plenty of snow coverage to be able to run the full race course distances, which is fantastic news as this event showcases some of the most beautiful cross-country skiing trails in the world while also giving participants some great gruelling hills to contend with.

One of my favourite things about the Hoppet is seeing the diversity of the racers, from elite international athletes, to people who have only been on skis once or twice before, from competitors in their 80’s+ to competitors being pulled in a sled by their parents. It’s a truly extraordinary display of the unique culture of cross-country skiing and the community bonding that it brings.

This year, the USA National team will be based at Falls Creek during Hoppet week, and while I cannot confirm nor deny whether they have been added to the start list yet, it would appear likely that they will be competing in this year’s event. This will be extremely exciting news for all aspiring athletes at the Hoppet, as it is not very often that one gets to stand on a start line with an Olympic gold medallist, let alone one with

such honest and impactful role-modelling like US star Jessie Diggins. No doubt there will be people tuning into from all over the world to watch this year’s Hoppet with so many international stars contending for a top position. •

Hoppet Waxing Service

Each year, the AUS National Team members volunteer their time to provide a waxing service to fundraise for their international racing season. They will be testing the conditions to choose the most appropriate waxes for the day, with tiered options of non-fluoro to full fluoro, depending on how fast you would like your skis to run. To use this service, simply drop your skis off to the Falls Creek XC Centre by 1pm on Friday August 26th, or register online at <https://www.snow.org.au/events/151889/>. • Ella Jackson




Altitude Physio
Falls Creek

Altitude Physiotherapy & Massage
Frueauf Village (below Milch Cafe)

BOOK ONLINE:
www.altitude.physio.com.au

OPEN SEVEN DAYS A WEEK
PHONE **5758 3766**

The Best Brands to Help you Conquer the #ToughestPlayground



ALPINE OUTFITTERS

2A Kiewa Crescent - Mount Beauty



Open 10am - late Daily!

Coffee, Drinks, Snacks & Mexican Menu
Regular Live Gigs with talented local DJ's

Slalom Plaza • Ph: 03 5732 8000
(At the bottom of Halley's Comet)

Seasonal Rental - Winter 2023

New Falls Creek Penthouse

This brand new fully furnished penthouse apartment includes:

- Three Bedroom/Three Bathroom plus Powder Room.
- Spacious Dining/Lounge Area.
- Well Equipped Kitchen with Separate Breakfast Bar.
- 140 square metres in size.
- Great Location with Panoramic Views.

Other features include Modern Laundry, Bar with three under-bench Refrigeration units, Drying Cabinet and Spa Bath. The apartment is spacious and enjoys lots of natural light.

Expression of Interest:
Mb: 0418 578 500 | Em: barry@prettyvalley.com



NOW OPEN ~ Seven Days a Week
Breakfast, Lunch & Dinner

1550 RESTAURANT

Slalom Plaza | Ph: 03 5732 8000
Bottom of Wombat's Ramble

NOW OPEN ~ Breakfast & Lunch
Coffee, drinks & snacks

1550 CAFÉ

Slalom Plaza
Next to Halley's Comet Queue Race

LOCAL HISTORY

A Man of the Mountains

"I think that credit for much of the background work in the initial development of Falls Creek should be given to Martin Romuld for his early encouragement and appreciation of the beauty of the high country and of skiing"

Fred Vines, A member of Bogong Ski Club in the 1940's

Born near Trondheim, Norway in 1905, Romuld began skiing at an early age. By the time he was six he was competing in various ski events, but it was in ski jumping that he competed at the National level. Romuld studied civil engineering in Trondheim but with the Great Depression looming and threatening Norway, he decided to emigrate, arriving in Australia in March 1928. While working in Melbourne in 1931, Martin returned to competitive skiing. For the next few years

he was to dominate both State and National jump and langlauf events while his great rival, Tom Mitchell, consistently beat him in the slalom. He was considered "one of the best ski jumpers the country has ever seen and one of the best all round skiers for his day." (Australian Ski Year Book 1988).

In 1934, the editor of Victorian Ski Year Book wrote "We are fortunate, from several aspects, in having Mr Martin Romuld as a member. Firstly, he brought honour to the Club during the past season by winning Australia's most coveted ski title: that of National Champion, a title which he will be successful in retaining for many seasons.

We were further indebted to him for his splendid work at Donna Buang for the jumping course. Mr Romuld was responsible for the plan and profile of the new jumping hill, together with the solution of its engineering problems."

In June 1936 Martin joined the State Electricity Commission (SEC) as resident engineer based at a hydro-meteorological station, Main Station (later known as Wilkinson's Lodge) erected near Wallace's Hut three years earlier. Martin's offsider, Joe Holston lived nearby in another hut (Holston's Hut) which burned down in October 1940. (AGL workers report finding the ruins of a hut not far from the old SEC Hut (Wilkinson Lodge) after the 2003 bush fires.)

While working, Martin however primarily skied alone - measuring flow rates and recording snow depths. At times additional workers would assist in the measurements and it was many of these SEC workers that Romuld taught to ski. Interest in skiing was such that in 1940 discussions about forming a ski club were held in his cottage and later the same year SEC workers based in Bogong village formed the Bogong Ski Club.



astra
DAY SPA

Relax and rejuvenate at
Astra Day Spa.

OPEN FROM 11AM - 7PM
BOOKINGS VISIT
WWW.ASTRAFALLSCREEK.COM.AU
OR CALL 03 5758 3496

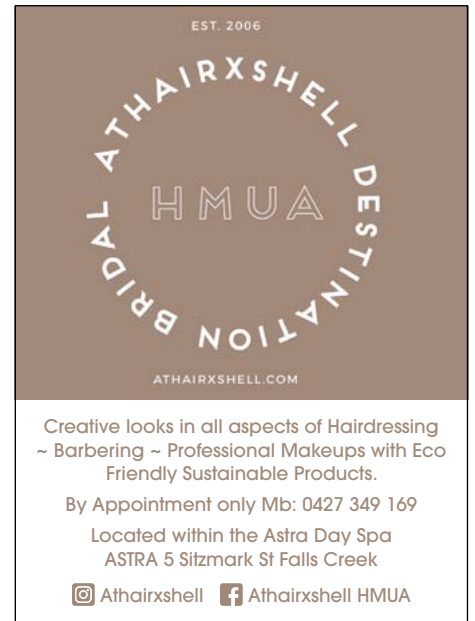
LOCATION - MAP: J4, 5 SITZMARK ST, FALLS CREEK



Seasons mb
fine fresh food

Thriving Café - Priced to Sell

Contact: Jenny Chellew
Accredited Business Broker
Mb: 0419 009 033
Em: jenny@betterbusinessbrokers.com.au



EST. 2006

ATHAIRSTHELL DESTINATION
HMUA

ATHAIRSTHELL.COM

Creative looks in all aspects of Hairdressing
~ Barbering ~ Professional Makeups with Eco
Friendly Sustainable Products.

By Appointment only Mb: 0427 349 169

Located within the Astra Day Spa
ASTRA 5 Sitzmark St Falls Creek

@Athairstshell fAthairstshell HMUA

Travelling to Falls Creek this winter?

Enjoy the comfort and safety!

A skeleton timetable will operate until Friday 25th June - when the full timetable will come in to operation. Refer to our website for further details.

www.fallscreekcoachservice.com.au

But remember, the same convenient service applies!
Leave the worries of pre-purchasing Resort Entry, Hiring and fitting Chains, coping with Anti-Freeze and icy slippery roads behind you.

Park your car in the Secure Car-Park in Tawonga South and enjoy the comfort of our modern warm coaches and experienced drivers for your holiday at Falls Creek. Check the Website for services from Melbourne, Albury and Mount Beauty

Group bookings and private transfers are also available for the entire 2021 winter season.



FALLS CREEK COACH SERVICE

233 Kiewa Valley Highway, Tawonga South
Phone: 03 5754 4024
* Fuel * Oil * Antifreeze * Chains *



Lake Eildon and Inlet Valve

We're proud to support our local communities

Each year, our AGL Hydro Community Fund awards grants to community-based initiatives, projects and events in and around Mount Beauty and Eildon.

To see if you are eligible for one of our grants, download our guidelines or call us, then submit your application between 1 September 2022 and 30 September 2022.

agl.com.au/hydro ☎ 03 5754 3222



agl
Progress for life

LOCAL HISTORY

Martin skied extensively over the High Plains on day trips extending from Mt Hotham to Mt Bogong. Andy Broad, in the November 1936 edition of Schuss magazine, wrote about joining him on a tour. "We decided to call in on our old friend, Martin Romuld who is stationed at the SEC's cottage. Martin is very fit, enjoys every bit of life on the plains, and is very pleased with his job. On the jump which he has already built at the rear of his cottage he has covered 128 feet (39 metres). He has also a slalom course set down the Middle Valley Creek.

During the afternoon he took us for a tour along Rocky Valley, towards Mt McKay. After running over it, Martin claims that Mt McKay possesses the finest downhill course he has ever seen in Australia, the descent being 3,000 feet (914.4 metres) to the snowline. This mountain also has ideal slalom courses, in addition to possessing a natural jumping hill. There are quite a number of adjacent slopes suitable for racing. When one hears an opinion such as that expressed by a skier of the calibre of Martin, it is wondered why our racing skiers claim that conditions on the plains are too flat for racing."

In the five years he was based at the S.E.C cottage, Martin was to have a great influence on the aspiring skiers of the day, who were no doubt impressed by his "steady upright stance" and the fact he skied "without any flamboyance or obvious effort."

Julian Newton-Brown pays further testimony to his prowess. "At one time Bill Kent-Hughes (later Sir Wilfred) was touring the Bogong High Plains and met Martin at Wilkinson's. During conversation Bill asked him how long it would take him to get to

Hotham and back. Martin said about six hours. Bill considered that impossible and bet him a dozen bottles of beer he couldn't do it in the time. Martin set off immediately and returned with an item from Hotham as proof in five hours 45 minutes." This unofficial record still stood in 1970. (One can only wonder what time our current ski champions would take for a Wallace's Hut - Hotham return trip - on classic waxing skis!).

In 1941 Martin joined the Royal Australian Air Force and after the war skied mainly at Mt Buller. He maintained his involvement in competitive skiing as an official. It was from participating in his first ski jump event at Falls Creek in 1958 that Julian Newton-Brown became friends with Romuld. The Falls Creek Museum has on exhibit, by courtesy of Newton-Brown, the wooden skis used by Romuld on his High Plains rounds.

A pair of his jumping boots are also on display. •

This article prepared and supplied by Diana Patterson, previous FCRM Board member and a member of the Falls Creek Historical Society. Contributions and items on history are most welcome. Contact Diana via Em: diana.patterson@bigpond.com). •

Right: Martin Romuld in 1933 as Combined Australian Champion from Australian Ski Yearbook 1988. Pic - Courtesy the Falls Creek Museum







I DREAM OF SNOW
vintage collectables & new décor

Memorabilia - Keep-sakes & Artefacts

Check the Website: www.idreamofsnow.com
Enquiries - Email: info@idreamofsnow.com



FOODWORKS Falls Creek



Open 8am - 7pm Daily

- Extensive grocery range
- Bottle shop: beer, wine, spirits
- Fresh fruit and vegetables
- Hot pies and sausage rolls
 - Heat and eat meals
 - Phone re-charge
 - ATM
- Newspapers and magazines

Located in Slalom day carpark at the bottom of Halley's Comet Chairlift.
Tel: 57 583 009



For pick and pack deliveries please visit www.foodworkshighcountry.com.au



NEXT WEEK @ WEST PEAK



**WEST PEAK
HOTEL**

Fridays: 3pm - 11pm • Dinner from 5:30pm
Woodfire pizzas from 5.30pm
Community Raïes from 5:30pm (draw begins at 7pm)
19/08 Alpine Radio • **26/08** Dragon Boat Club

Saturdays: 12noon - 11pm • Lunch 12noon - 2pm • Dinner from 5:30pm
\$13 Cocktail Specials! Live Music 3pm - 6pm
20/08 The fabulous 'Belle & Conrad' for you enjoyment!

Sundays: 12noon - 11pm • Lunch 12noon - 2pm • Dinner from 5:30pm

Mondays & Tuesdays - CLOSED

Wednesdays: 3pm - 9pm • Dinner from 5:30pm

Thursdays: 3pm - 9pm • Dinner from 5:30pm
Texas Hold em Poker • 7pm start

1 Lakeside Ave, Mount Beauty **03 5754 4985** www.westpeakhotel.com.au



Zirky Real Estate

Alpine Specialists

Snow Ski Apt 32	4 ☺ 3 ☺	\$1,390,000
Cedarwood Mgt Rights	2 ☺ 1 ☺	\$795,000
Koki Apt 1	3 ☺ 2 ☺	\$1,975,000
Milch Café & Bar		\$790,000
St Falls Commercial WR 7		\$450,000
Some Place Else Bar & Grill		\$580,000

We have registered buyers looking to purchase.
Contact us if you are thinking of selling!

Elevate your Lifestyle | Christa Zirky 0402 277 808 | zirkyrealestate.com.au

PROPERTY OF THE WEEK

St Falls E409

St Falls apartment E409 is a managed apartment in the St Falls complex at Falls Creek. This is a pure ski-in ski-out apartment that is light filled, featuring two bedrooms and two bathrooms, sleeping six people with a spilt queen bed in each bedroom and a pull-out sofa bed in the lounge room. It is approximately 72sqm internally with an 18sqm balcony with private hot tub and is priced at \$585,000 sold walk in walk out. This single level apartment on Level Four in the East St Falls building has a great aspect which takes in the stunning alpine views of Roper's Spur.

Easily accessible with a lift, it offers a good-sized kitchen with microwave, stove top, two door fridge and good storage. There is owner lockable storage in the master bedroom, as well as more lockable storage

in the kitchen meaning you can store items ready for your next stay.

St Falls is in an amazing location with one of the main ski lifts, Halley's Comet, outside the doors with a supermarket, post office, childcare, ski hire, retail, restaurants, bars and ski valet on site. Plus, you can drive to the door and unpack which is a luxury in winter at Falls Creek. You also have access to a heated indoor swimming pool, sauna, and cold plunge pool.

The St Falls complex has a long alpine head lease, and this apartment is sold with a management agreement in place. With the management agreement, owners can have seven weeks use per annum which is not restricted. If owners wish for more than seven weeks use, the owner shall pay the manager a letting fee equal to 10% of the rental that would otherwise have been

charged. This is the perfect amount of time to enjoy the slopes in winter or use the apartment during summer & winter.

Over the last decade, much work has gone into developing and securing summer trade. The resort now boasts in excess of 40km of mountain bike trails (with more planned) – with most being accessed from Slalom Plaza. Add to these the many kilometres of aqueducts and management vehicle tracks and your exploring, whether on foot or on your bike is endless. The Falls to Hotham Alpine Crossing is an iconic Australian walk of international standard being promoted by Parks Victoria.

The suite of summer activities includes Ignition – the launch of the mountain bike season; the Alpine Challenge; the Mile High Dragon Boats; the regional Longest Lunch; the Bicycle Network Peaks

▼ Falls Creek	MEDICAL SERVICES	Mount Beauty ▼
WHERE Bottom of Gully Chairlift.	WHERE Tawonga Crescent.	
WHEN Open Daily 10am – 12:30pm & 2pm – 5pm (Map Ref J6)	WHEN 8:30am – 5pm Mon – Friday 10am – 12noon Saturdays.	
HOW Ph: 03 5758 3238 all day. 24 hours for Emergencies.	HOW Ph: 03 5754 3400 for appointments	
WHO General Practitioners experienced in Family and Snow Sports Medicine.	WHO Mark Zagorski OAM, Jeff Robinson, Libby Garoni, Sky Delaney, Laura Zagorski, Angela Stratton, Lauren Cusson, Damian Heman, Daniel Florisson & Andrew Mason.	
WHAT First fully accredited snowfields practice in Australia based on 36 years experience.	WHAT Fully accredited General Practice with 42 years service to the Upper Kiewa Valley.	

"You've only got one head – put a lid on it!"

EMERGENCY	
EMERGENCY	000
Ambulance	000
EMERGENCY BROADCASTER	
Alpine Radio (Fires & Floods)	96.5 FM
ELECTRICITY	
Faults & Emergencies	13 17 99
FIRE	
Falls Creek/Mount Beauty/ Tawonga	000
HOSPITAL	
Mount Beauty	5754 3500
MEDICAL CENTRES	
Falls Creek	5758 3238
Mount Beauty	5754 3400
POLICE (non-emergency)	131 444
Falls Creek	5758 3424
Mount Beauty	5754 4244
Wangaratta	5723 0600
REGIONAL ROADS VICTORIA	133 778
Falls Creek	5758 3287
RACV	
Falls Creek/Mount Beauty	5750 1230
BURN OFF NOTIFICATIONS	
CFA	1800 668 511
STATE EMERGENCY SERVICE	
Falls Creek	13 25 00
WILDLIFE RESCUE	0421 553 527

PHYSIOTHERAPY



5A Hollonds Street, Mount Beauty
Phone: 5754 1270

WELCOME BACK TO WINTER!



We have lots to keep you warm!
Clothing, Boots, Work wear, Insulation, Heaters!
If you need it, we have it – or we'll try and get it!
Gift vouchers and free gift wrapping available

Mount Beauty Hardware & Drapery Store

Mon – Fri: 9am-5:30pm
Saturday: 9am-4pm
Sun & Public Hols: 9am-2pm



12-14 Hollonds Street, Mount Beauty
Ph: 03 5754 1999



2022 WINTER PUBLICATION SCHEDULE & RATES

PUBLICATION SCHEDULE:

Ed 11 * 26.08.22 * The International Kangaroo Hoppet, Birkebeiner and Joey Hoppet. (C)
Ed 12 * 02.09.22 * Kangaroo Hoppet Wrap and Results. Summit Masters Bumps Comp (C)
Ed 13 * 09.09.22 * Wild Guide Escapes Ski Touring Retreat. Wrap of Summit Masters. (C)
Ed 14 * 16.09.22 * Start Victorian School Holidays. Full list of Summer Activities. (C)

DISTRIBUTION: • All accommodation houses, restaurants, businesses, club lodges & apartments in Falls Creek, Bogong Village, Mount Beauty, Tawonga South, Tawonga & Dederang, plus the RMB's between Dederang & Tawonga & selected venues in Bright & Myrtleford.

ONLINE: • Available in PDF form at: www.falls creek.com.au/whatson/

WEBSITE: • www.thisweekinfalls creek.com.au

ADVERTISING RATES:

DISPLAY:

- 1 column (6cm wide) = \$15.00 per cm. 4cp = \$20.00 per cm.
- 2 column (12.5cm wide) = \$25.00 per cm. 4cp = \$35.00 per cm.
- 3 column (19cm wide) = \$35.00 per cm. 4cp = \$49.00 per cm.

CLASSIFIEDS: • Like the Trading Post. Send in your Classifieds and pay when you sell.

BUSINESS DIR.: • \$5.90 per line per Edition.

DEADLINE: • Friday 2.00pm prior to publication date

CONTRACT: • A Winter Season Contract is available for advertising in all 16 editions of winter offering a 15% discount – Invoiced four Editions in advance. Invoice dates are: 10.06.22, 08.07.22, 05.08.22 & 02.08.22. •

ENQUIRIES

For Information on Advertising or Editorial Contributions please contact:
Ken Bell Mob: 0400 350 488
Email: kencbell@bigpond.net.au

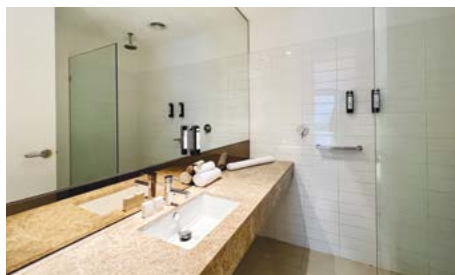
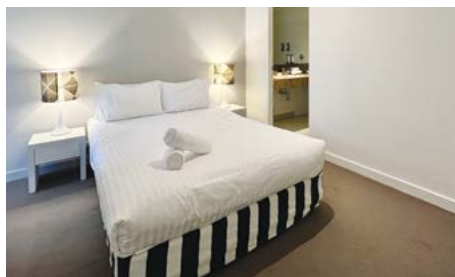
For Payment, Placement of Adverts or Subscriptions, please forward to:
Ph/Fax: 03 5754 1346
Office Address: Suite 2, 41 Bogong High Plains Road, Mount Beauty
Postal Address: P.O. Box 325, Mount Beauty 3699. ABN: 22 171 749 807

PROPERTY OF THE WEEK




Challenge Falls Creek; the Easter Festival as well as regular mountain bike shuttles and Trails, Tales and Tucker guided walks.

This is a rare opportunity to secure a property in the most prestigious complex in Falls Creek. Price for this two bedroom, two bathroom apartment is \$585k. Contact: Christina Smit (Christa), Zirky Real Estate, Mb: 0402 277 808. Wb: www.zirkyrealestate.com.au.




Helen Mathew m 0419 399 737
Mount Beauty | www.mountaincreekarch.com



Visit the **Bogong Power Station Information Centre**
For historical & geological exhibits.
Now open Sundays
10:30am - 2:30pm Bogong Alpine Village
Group Bookings - Phone 03 5754 3318



SETTLERS TAVERN
Your comfortable local pub!
BAR OPEN FROM 2PM
DINNER FROM 5:30PM
GREAT PARMIES WEDNESDAYS!
CLOSED SUNDAY & MONDAY
Talk to us about our function and meeting rooms and catering for your event!
PH: 03 5754 4888
KIEWA VALLEY HWY, TAWONGA SOUTH

Roi's
Fully licensed restaurant

INTIMATE DINING EXPERIENCE
Our intimate personal dinners for small group are proving to be a favourite with regulars and visitors.
Please feel free to contact us and discuss your requirements and timing.
Regards, Roi and Sue.
Take-Away Pasta Dishes
Monday Evenings!
All your favourites - Call ahead to order!

Phone: 03 5754 4495
177 Kiewa Valley Highway, Tawonga

TRADING POST CLASSIFIEDS

FOR SALE

One brand new pair of ASICS Tennis shoes, size 46 Euro (11.5 US). Worn once. Too tight for me. Retail Price: \$159.95. Will sell for \$120. Ph: 0400 350 488.

Stubby series 1000 universal woodturning lathe, as new, \$9,000. Ph: 0408 466 790.

Cane Armchair and footstool. \$30. Six metal framed dining chairs upholstered in burgundy vinyl \$30. Ph: 0477 443 964

RM Williams Cuban Heel Boots, Bushman Tan, with added rubber protective sole. Almost brand new. Size 9 G. Retail \$309.95 will sell for \$250. Ph: 0400 350 488.

Snowmobile 2004 Polaris Trail Touring. Electric start and electric reverse. Only travelled 240km, always housed undercover at Wang Ski Club and regularly serviced. Comes with service manual and supplement. Located Mount Beauty, all offers considered. Contact Chris 0457 410 933.

Orbea AVANT M20 DISC road bike, Carbon frame, size 60, colour- Carbon-Blue. \$1,950. * Nello Viper 51 kayak. \$1,500. * Ph: 0408 466 790.

Blade X rollerblades, as new not yet used, men's size 43, \$100. Ph: 0408 466 790.

THOUGHT FOR THE DAY

He knows nothing; and he thinks he knows everything. That points clearly to a political career." - George Bernard Shaw

VALLEY FUN & FITNESS CLASS

Every Tuesday at 9am at the Ladies Facility, Dederang Recreation Reserve. All equipment provided. Bring a drink bottle and towel. \$6 per session. All Welcome. A great way to keep fit and socialise at the same time. Class usually followed by coffee at the Dederang Shop. Classes by Narelle Jones (Personal Trainer). Enquiries: Sharon McEvoy 0438 289 293 (th6maccas@bigpond.com)

BUSINESS DIRECTORY

ALTERATIONS, DRESSMAKING & REPAIRS

Call Kerry Mb: 0407 814 114 for all sewing needs.

ALTITUDE PHYSIO & MASSAGE

Frueauf Village (below Milch Café) Grnd Floor, Rm 2, 4 Schuss St. Falls Creek. Ph: 03 5758 3766. Em: fallscreek@altitudephysiotherapy.com.au. Wb: www.altitude.physio

BOWEN THERAPY & MASSAGE

Tawonga South. Ph: Heather 0428 993 125

BUILDING & ELECTRICAL

Duggan & Hanlon, your complete building service. Please call Justin Mb: 0458 220 879.

CAKE MAKING & DECORATING

Elene Wood at www.studioecakes.com.au in Tawonga - for all occasions. Mb: 0409 673 192 or Em: hello@studioecakes.com.au

CAR DETAILING

Give Steve a call in Tawonga South. Ph: 0423 499 086

CARPENTRY & BUILDING SERVICES

Oztek Constructions Pty Ltd. We do local building work, renovations, extensions and maintenance. Email Dave at: oztekconstructions@gmail.com. Or Ph: 0466 990 862.

CIVIL CELEBRANT - HEATHER MULL

Quality Ceremonies - All Types. Mb: 0428 993 125. www.celebrant-ne-vic.com.au

ELECTRICAL CONTRACTOR

Altitude Electrical - no job too big or too small. Domestic, Commercial & Industrial. Ben Svarc Mb: 0419 801 109

FREIGHT - ALB - MTB - FALLS CREEK

Remo's Transport from Albury/Wodonga to Mount Beauty and Falls Creek Mon to Fri inclusive. Refrigeration available. Ph: John or Esther 0417 414 320.

HAIRDRESSER

Natalie Raymond, Birds Nest Salon, 26 Hollonds Street, Mount Beauty. Open Six days a week and evenings by appointment. Ph: 03 5754 1177.

LD'S HOME PET CARE

Per Care and Dog Walking. Ph: Lisa 0407 541 695

LOCKSMITH & HANDYMAN

Codi Coutts - servicing the Kiewa Valley & North East Victoria. Ph: 0475 388 990. Em: kiewavalleyl locksmith@yahoo.com

PAINTING SERVICES

Interior/Exterior, Domestic/Commercial. Obligation Free Quotes. Quality & Service Guaranteed. KLM Alpine Painting Services. Ph: Laif: 0437 023 921.

PHYSIOTHERAPY

Kiewa Valley Sports & Spinal Therapy, 5A Hollonds St, Mount Beauty. Out of Hours & Home visits available. HiCaps. Ph: 03 5754 1270.

SAFETY SCAFFOLD

Mount Beauty and Falls Creek area. Ph: 0418 578 500.

SECURE STORAGE

From 2m x 2m through to 3m x 7m. Ph: 0418 578 500.

SPORTS MASSAGE

Book On-Line: impactmassage.com.au

STORAGE

Caravans, Vehicles, Pallets, Large Lock-Up Units. Ph: 0428 361 497. www.alpinewarehousing.com

SKI de FEMME

Another Success

The 28th Ski de Femme last Saturday attracted 120 women all up. "Excitement mounted and it happened and we loved the energy generated" summed up the day for the organisers from the Birkebeiner Nordic Club! Three years in hiatus and Ski de Femme was a huge success thanks to all volunteers and club members who helped out on the day. The club promotes the event as a great opportunity for women, our local community and club members to have a very jolly fun day out on XC skis. A good enough day weather wise helped, and scones, pikelets, plenty of jam and cream and tea added to the great atmosphere on Saturday in the Nordic Bowl. The line-up of volunteer coaches included familiar local identities Mish Forrer, Jeanette McLaren and Mary Hall, Birkie dual Olympian star Casey Wright, World Champ skiers Anna Trnka and Kat Paul and a stellar line up of experienced coaches ensured everyone would have a few pointers to help them ski better.

After the 1.5 hour clinic, a fun race was held over 1km, 2km and 4kms. There were lots of winners who were not necessarily placegetters on the day (who did cross the line first?), and who enjoyed the spot prizes generously donated by local businesses supporting this 'girls day out.'

The club would like to thank the following sponsors who generously made the effort



Casey Wright (right), our two times Olympian lining up for the 'fun race' Pic – Courtesy Ronice

and racing heart rates worth it. Falls Creek Resort Management; YMCA Howman's Gap Accommodation and YMCA XC Ski Centre; Brazen Brownies; Bright Brewery; Tawonga Bakery; Mountain Sports Physiotherapy; Silver Seed Jewellery (Lisa McClusky); Wild Flower Pilates, Honey Bird Coffee AND our Volunteer Coaches. Ronice was particularly pleased to win a pack of Bright Brewery beer and sends huge thanks to all who made the day so fun! •

This Weekend

Rocky Valley Rush / Sun Valley Ramble. The 15km Rocky Valley Rush or 7km Sun Valley Ramble freestyle cross country race this weekend is a great chance to get some race pace training before the Hoppet. This is the second of the citizen races organized by Birkebeiner Nordic Ski Club and sponsored by Snow Trek and Travel, Wodonga.

Online entries only @ <https://alpinetiming.com.au/rg308>. Entry fees are very reasonable and you can enter up to an hour before the race. •

WHAT'S ON IN 2022

COVID-19 Restriction changes and weather may impact some of these events.

REGULAR WINTER EVENTS

WEDNESDAY & SATURDAYS

Night Skiing as Wombat's Ramble lights up, 6pm to 8:45pm allowing you to continue your ski and snowboard adventures.

TWILIGHT TUESDAYS

Taking place every Tuesday to late August. 3:30pm to 5:30pm in the Village Bowl. Fire pits, marshmallows, games, music and Pete the Snowdragon. Further details: 03 5758 1200.

THURSDAYS

Fireworks Fiesta – 7pm Every Thursday from July 7th to August 25th Best enjoyed from the Village Bowl near the Frying Pan Inn.

- AUG 20** Park Run. 8am at Bicentennial Park by the lake in Lakeside Avenue. No run on Hoppet Day.
- AUG 20** TDFNL Rd 18. Dederang Mount Beauty V Beechworth
- AUG 20** Big Air & Storm the Castle in Ruined Castle park from 1:30pm. Competition from 2:45pm.
- AUG 21** Rocky Valley Rush & Sun Valley Ramble 15 & 7.5km. 10:30am Nordic Bowl. Ph: 0427 006 246
- AUG 27** Kangaroo Hoppet 9:30am. Australian Birkebeiner 9:40am. Joey Hoppet 9:50am. Nordic Bowl. Entries Now Open! Visit: <https://hoppet.com.au/>
- SEP 3 & 4** Australian Junior Sprint (Sat 9:30am) & Distance (Sun 10am) Championships. Nordic Bowl. Ann Bellingham 0427 006 246
- SEP 2-11** Gay Ski Week at Falls Creek. Go to <https://pointsofdifference.com/gay-ski-week-australia-2022/>
- NOV 18-20** Blue Dirt Ignition Mountain Bike Festival. Tickets now on Sale. Visit: <https://bluedirt.com.au/ignition-mtb-season-opener/>
- NOV 26-28** Falls Creek Alpine Challenge. Distances of 10/16/25/42/60/100/160 km. For further details and to enter, Em: runningwild56@bigpond.com or visit: <https://www.runningwild.net.au/>

FallsCreek VILLAGE DIRECTORY



- | | | | | |
|-----------------------|------------------|--------------------------------------|------------------------|----------------------------|
| Snow-cleared road | Ski lift | Shuttle stop | Defibrillator location | Police / CFA / SES |
| Ski-in / ski-out road | Street number | ATS (Accommodation Transfer Service) | Information centre | Medical centre / ambulance |
| Stairs | Village bus stop | Toilets | Post office | Helipad / Parking |