

Snow Chains at Falls Creek 2021

All drivers who enter Falls Creek Resort are required to carry chains at all times and fit them when directed. Penalties apply for not carrying chains or for carrying chains that don't fit.

The legislation can be viewed here on the [VicRoads website](#).

Outline of the ladder chains and diamond pattern chains:

SNOW CHAINS

There is a wide variety of snow chains available to either purchase or hire which improve traction to different degrees. To be effective, some part of the chain must be in contact with the road surface at all times to continuously generate the necessary traction. Some types of snow chains, such as certain ladder chains, should not be used as the spacing between the chain 'rungs' can be excessive and allow the bare tyre contact with the road surface; see Figure 1. The Roads and Traffic Authority (RTA) recommends that snow chains comply with the performance criteria specified in the Austrian Standard ONORM V5117 *Snow chains for vehicles classes M1, N1, O1 O2 Requirements, testing, marking of conformity* for vehicles up to 3.5 tonnes and ONORM V5119 *Snow chains for vehicles classes N2, N3, M2, M3, O3, O4, O2 – Requirements, testing, marking of conformity* for heavier vehicles.

FIGURE 1: DIFFERENT TYPES OF SNOW CHAINS FITTED TO A WHEEL

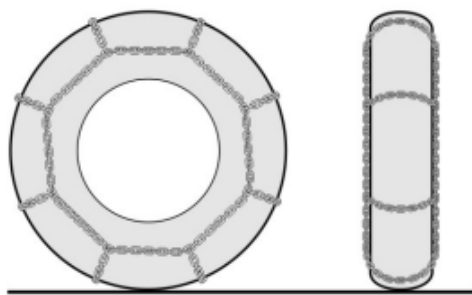


Figure 1(a) Inappropriate ladder snow chains

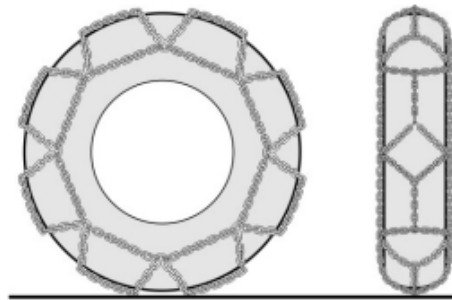


Figure 1(b) Effective diamond snow chains

To be effective, some part of the snow chain must be in contact with the road surface at all times.

Snow Chains at Falls Creek 2021

Allowed snow chains:



Snow Chains at Falls Creek 2021

Chains NOT allowed:



Roll over image to zoom in

Spider chains



Snow socks



Ladder chains

